

# MAPPING OF CLOVER GRASS LEYS USING IMAGE RECOGNITION

Søren Skovsen, Ph.d.-student.  
Morten Stigaard Laursen, Postdoc  
Rasmus Nyholm Jørgensen, Senior Researcher  
Henrik Karstoft, Professor

Department of Engineering, Aarhus Universitet

Contact:  
Søren Skovsen  
ssk@eng.au.dk

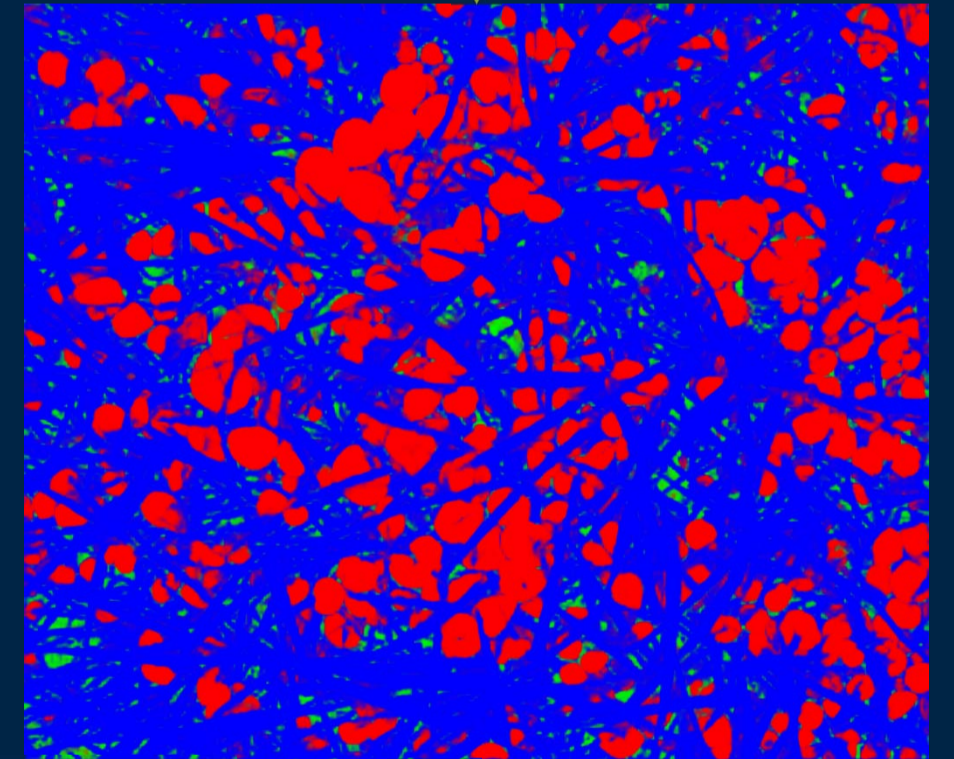
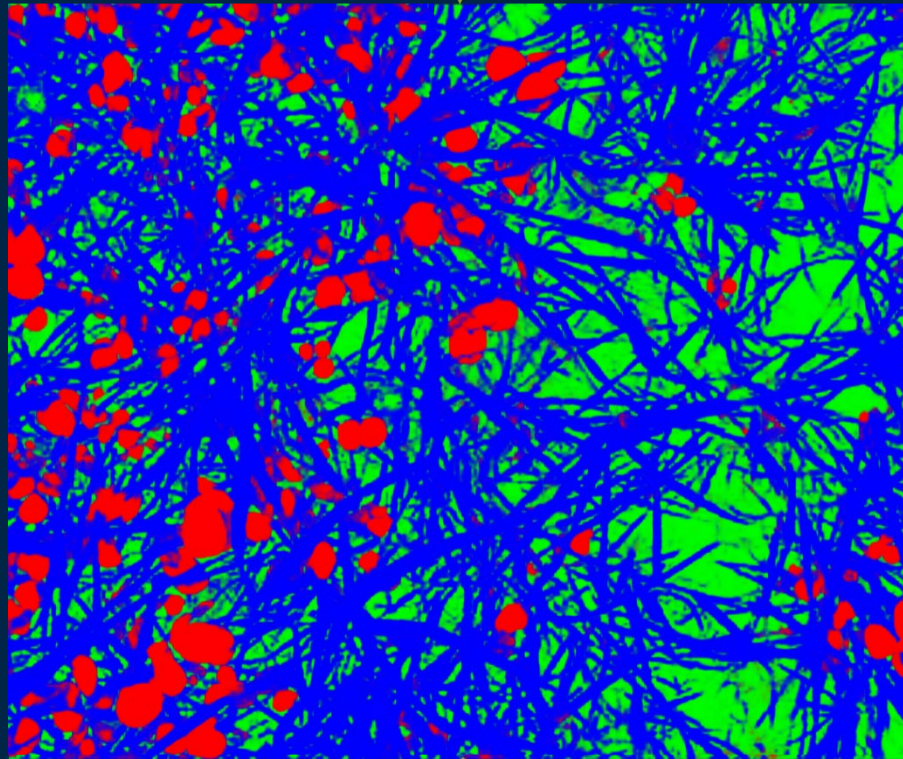
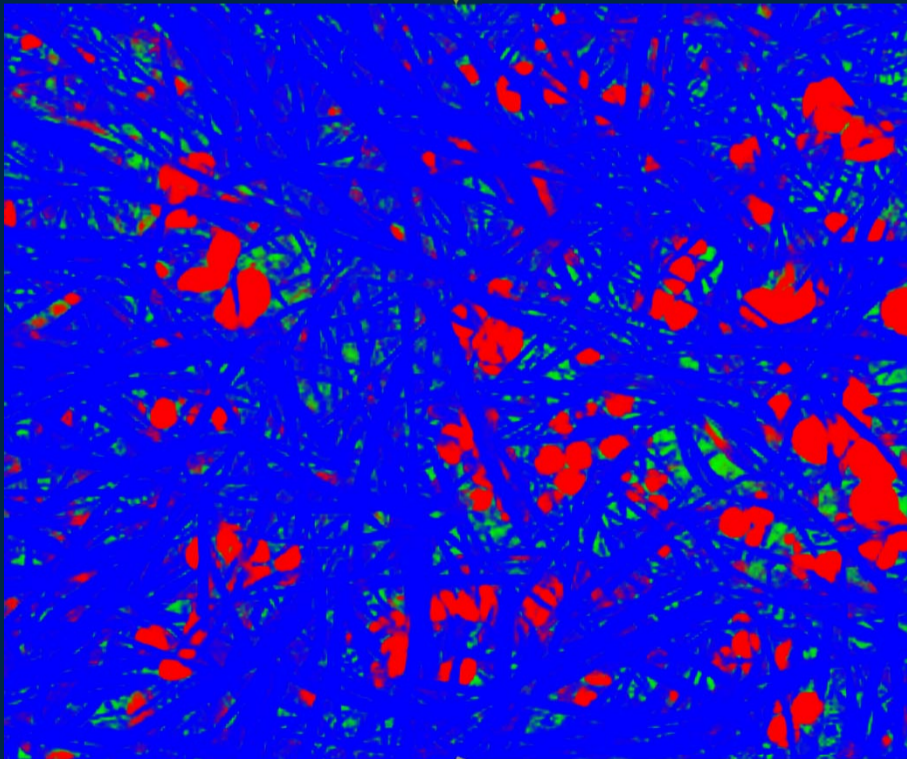
Web: vision.eng.au.dk



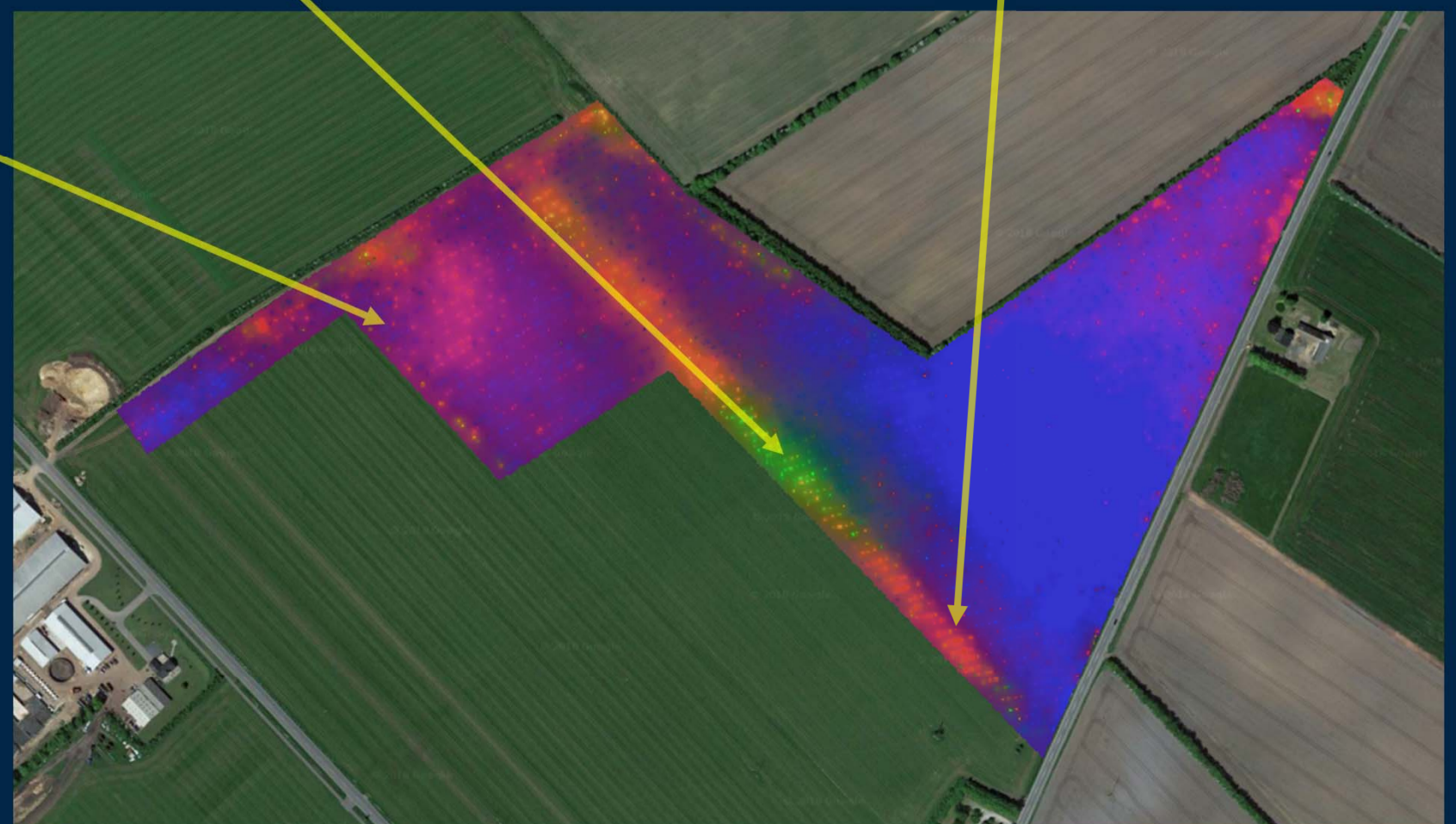
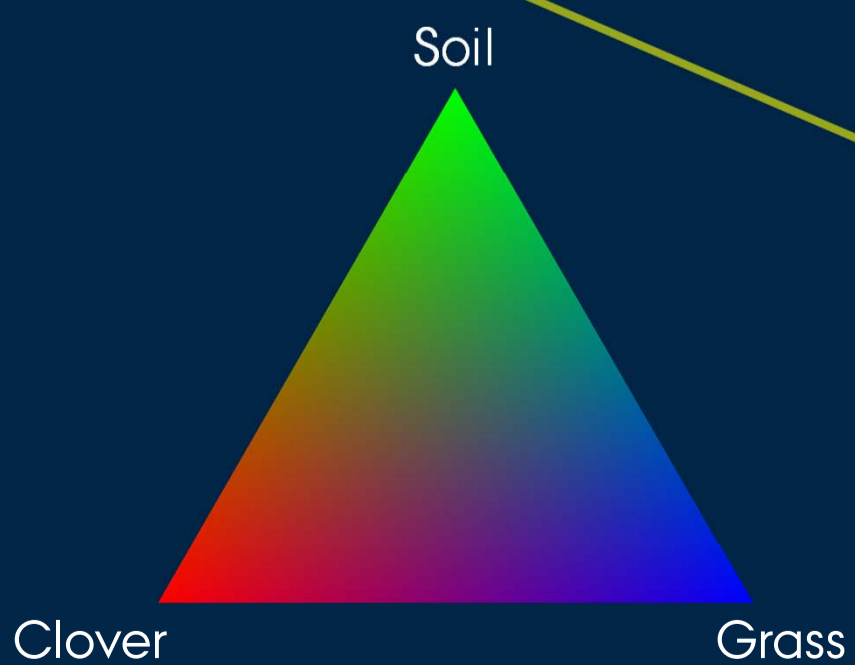
## 1) Geolocated image acquisition at 30 km/h



## 2) Automatic pixelwise classification of grass, clover, weeds and soil



## 3) Clover grass mapping for precision agriculture & fertilization strategy development



SMARTGRASS CLOVERSENSE

